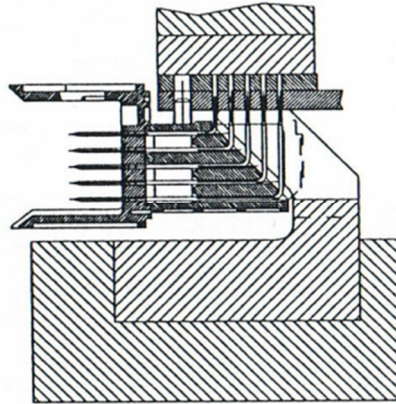


# *HM1 Repair tooling*

## Right angle Male 4 and 5 row



Revision : 01  
Date : November 2014  
Author : Anthony Jacqmain



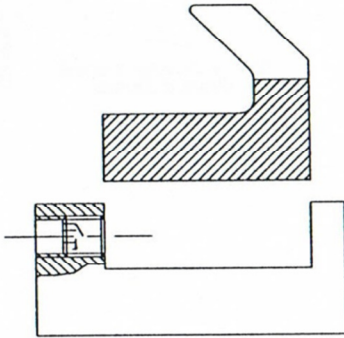
## Repair tools for HM1 male right angle press-fit 4 and 5 row

	Number of modules			
	<b>1</b>	<b>2</b>	<b>4</b>	<b>8</b>
Support* Part number (quantity)	HM1-5277 (1)	HM1-5278 (1)	HM1-5279 (1)	HM1-5279 (2)
Rest Part number (quantity)	HM1-5275 (1)			
Push block Part number (quantity)	HM1-5235 (1)			
Nose & Gauge - 4 row Part number (quantity)	HM1-5273 (1) + HM1-5284 (1) -> only for pcb thickness > 1,8 mm			
Nose & Gauge - 5 row Part number (quantity)	HM1-5263 (1) + HM1-5250 (1) -> only for pcb thickness > 1,8 mm			

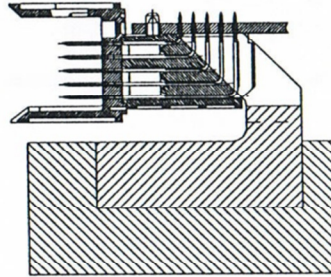
- **Other combinations are also possible**

# HM1 male right angle repair tool process

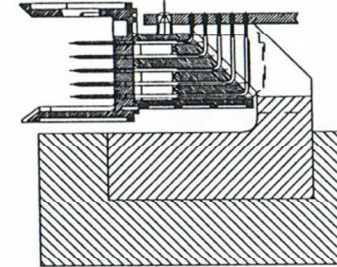
1-Place supports on the rest and screw



2-Place the connector on the rest.



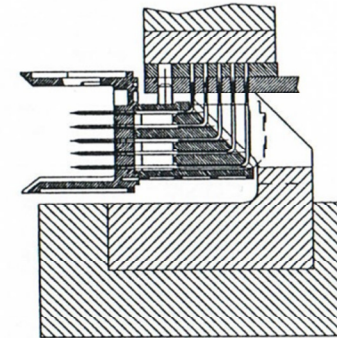
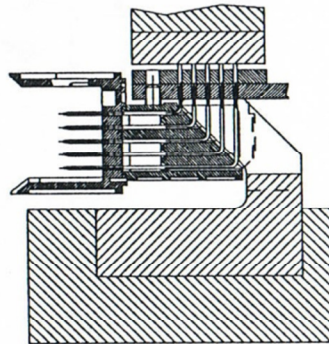
3-Press terminations with a pushblock

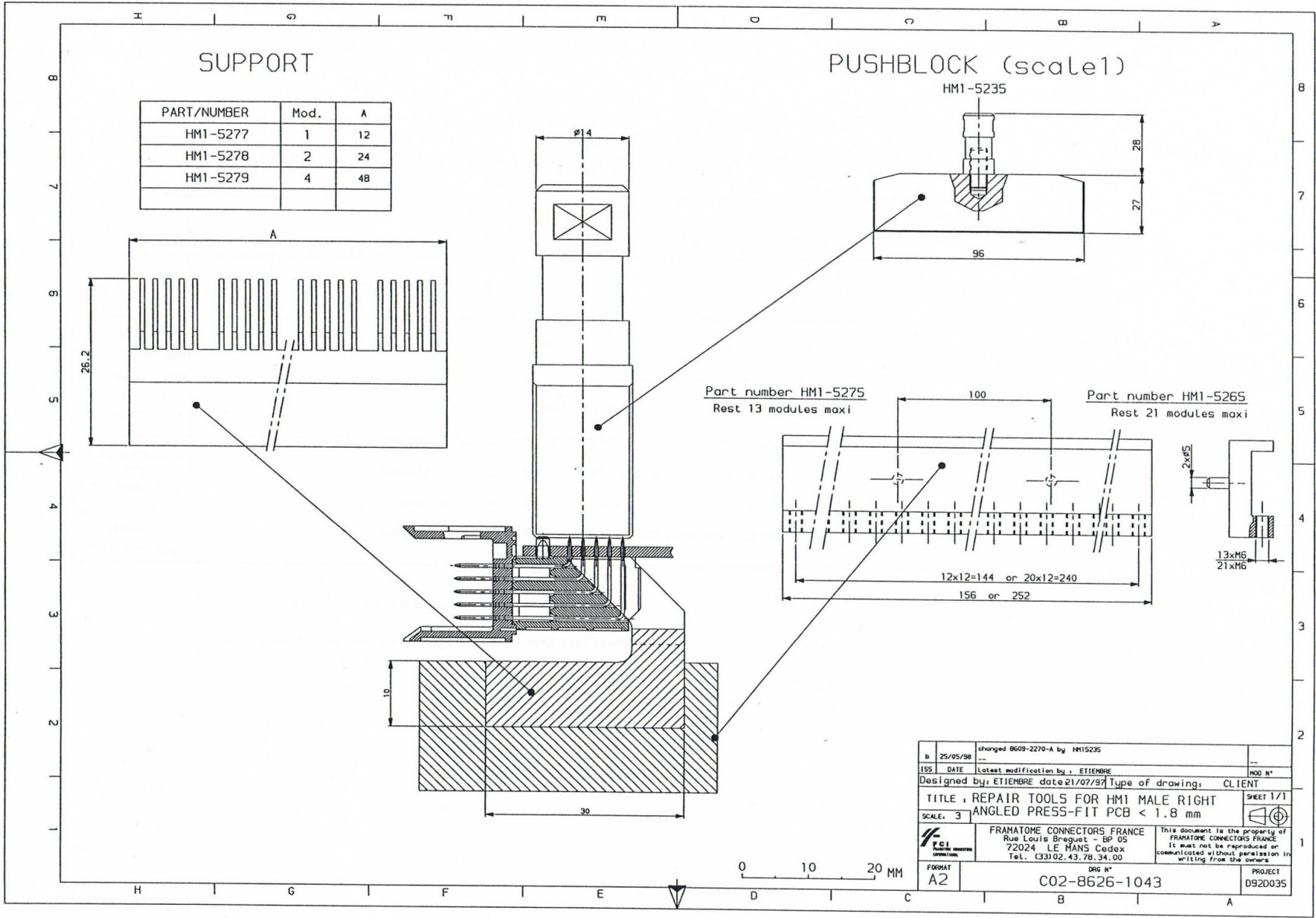


4a- PCB thickness  $\leq 1.8$  mm  
remove connector

4b- PCB thickness  $> 1.8$  mm  
place a gauge and a nose

5-Press terminations with a pushblock  
and remove connector



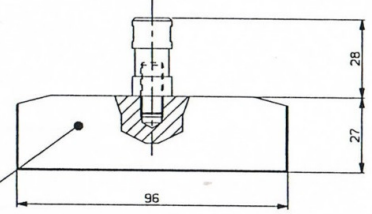
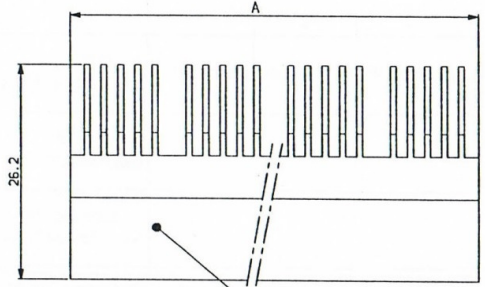


SUPPORT

PUSHBLOCK (scale 1)

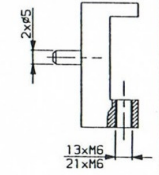
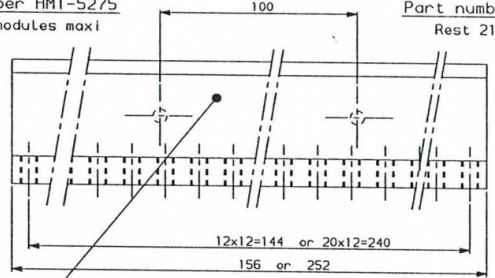
PART/NUMBER	Mod.	A
HM1-5277	1	12
HM1-5278	2	24
HM1-5279	4	48

HM1-5235

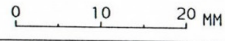


Part number HM1-5275  
Rest 13 modules maxi

Part number HM1-5265  
Rest 21 modules maxi

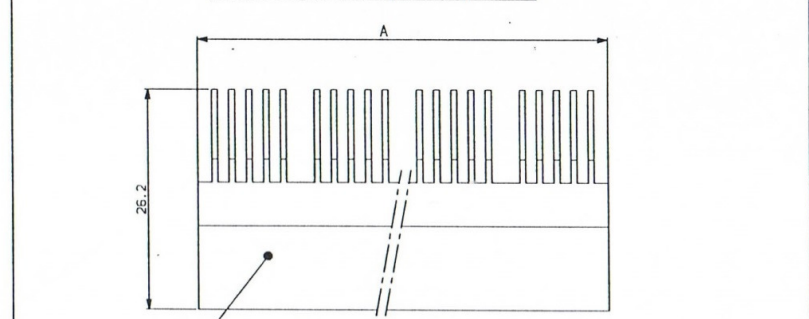
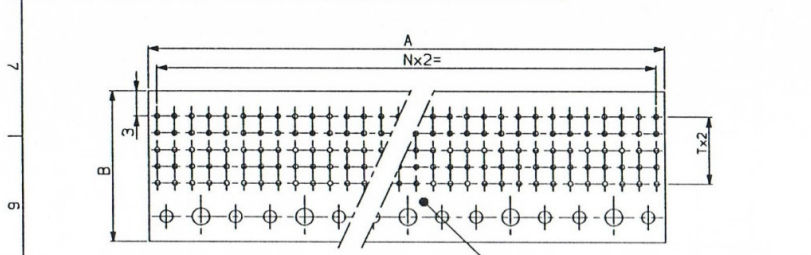


b	25/05/98	changed 8609-2270-A by HM15235	
ISS DATE	Latest modification by: ETIEMBRE		MOD N°
Designed by:	ETIEMBRE date 21/07/97	Type of drawing:	CLIENT
TITLE: REPAIR TOOLS FOR HM1 MALE RIGHT ANGLÉD PRESS-FIT PCB < 1.8 mm			SHEET 1/1
SCALE:	3		
	FRAMATOME CONNECTORS FRANCE		This document is the property of FRAMATOME CONNECTORS FRANCE It must not be reproduced or communicated without permission in writing from the owners.
	Rue Louis Breguet - BP 05 72024 LE MANS Cedex Tel. (33)02.43.78.24.00		
FORMAT	A2	DWG N°	PROJECT
		C02-8626-1043	0920035

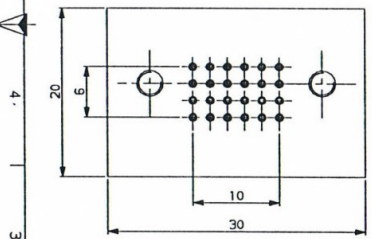


PART/NUMBER	Mod.	A	Nx2=	B	Tx2=
HM1-5250	4	48	46	18	8
HM1-5284	4	48	46	16	6

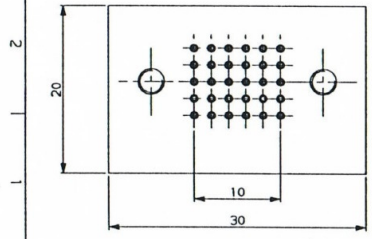
PART/NUMBER	Mod.	A
HM1-5277	1	12
HM1-5278	2	24
HM1-5279	4	48



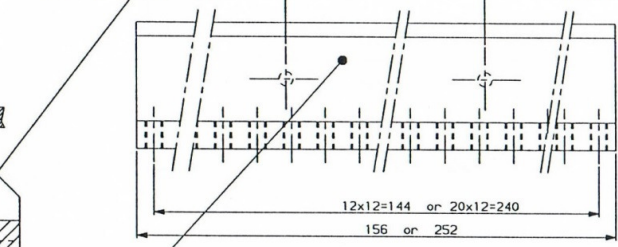
Part/number HM1-5273  
NOSE with 24 pins  
for extraction



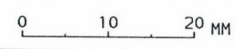
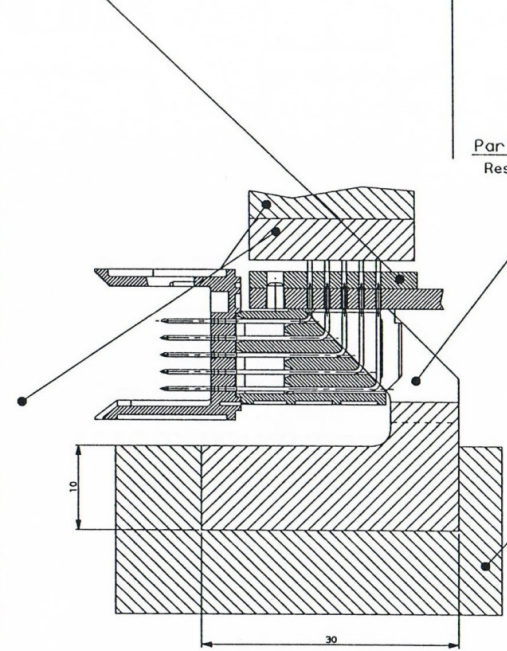
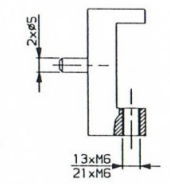
Part/number HM1-5263  
NOSE with 30 pins  
for extraction



Part number HM1-5275  
Rest 13 modules maxi



Part number HM1-5265  
Rest 21 modules maxi



a	24/11/97	First issue	
ISS	DATE	Latest modification by: ETIEMBRE	MOD N°
Designed by: ETIEMBRE date 24/11/97 Type of drawing: CLIENT			
TITLE: REPAIR TOOLS FOR HM1 MALE RIGHT ANGLE PRESS-FIT FOR PCB > 1.8mm			SHEET 1/1
SCALE:	3		
FRAMATOME CONNECTORS FRANCE	FRAMATOME CONNECTORS FRANCE		This document is the property of FRAMATOME CONNECTORS FRANCE. It must not be reproduced or communicated without permission in writing from the owners.
	Rue Louis Breguet - BP 05 72024 - LE HANS Cedex Tel.: (33) 02.43.78.34.00		
FORMAT	A2	DRG N°	PROJECT
		C01-8626-1043	D92D035

For any support, please contact Föhrenbach Application Tooling:

Föhrenbach Application Tooling  
Krijgsbaan 128  
B – 2640 Mortsel  
Belgium

Tel : +32 (0)3 216 19 98  
Fax : +32 (0)3 216 15 07  
e-mail : support@foehrenbach.be  
Website : [www.foehrenbach.be](http://www.foehrenbach.be)